

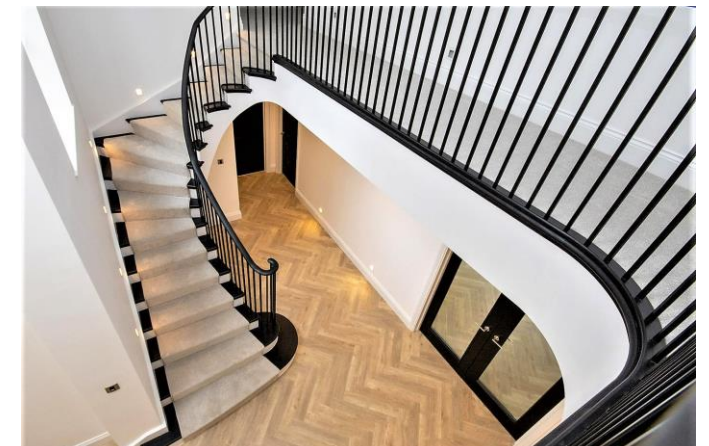


wnproperties.co.uk

Shenfield Place, Shenfield CM15 9AJ

A rare opportunity to acquire one of two newly constructed houses built by locally renowned Les Clark Building Contractors who established in 1975 and enjoy a proud reputation for constructing to the highest standards of finish, having completed many projects throughout the area. The site is positioned at the junction of Hallwood Crescent and Shenfield Place and is easily accessible to both Brentwood School and Shenfield Broadway with its mainline railway station offering a fast and frequent service to London. Both properties offer spacious five bedroomed family accommodation with large kitchen/family room, living room, playroom, study and utility with plot 2 having the added advantage of an additional laundry room with laundry-chute from the first floor. Upstairs you will find five bedrooms over two levels, all with en-suite in plot 1 and three with en-suites in plot 2 with a spacious dressing room in the master bedroom. Anticipated build completion late Spring/Summer 2022.

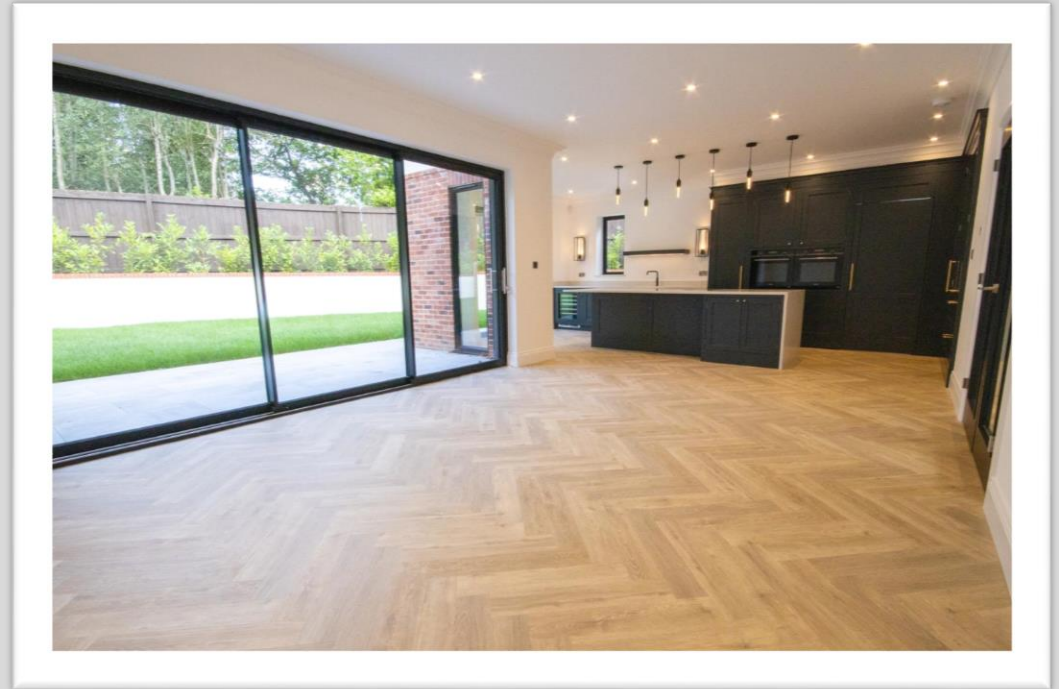
£1,995,000



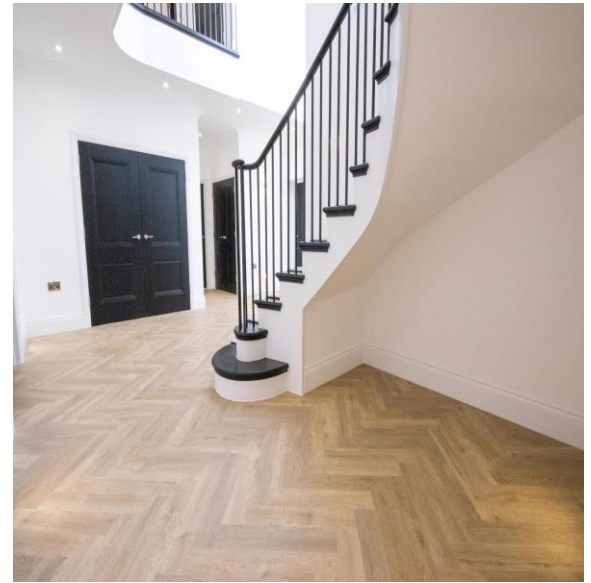


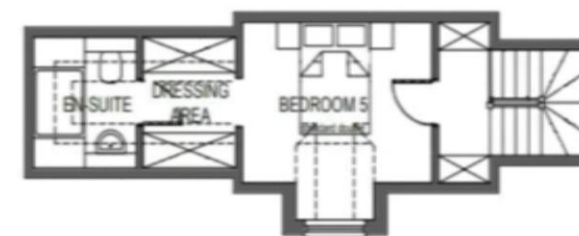






Specification; High end architect-designed accommodation, underfloor heating, Control4 smart home lighting system, luxury fitted kitchens by The Brighton Kitchen Company with Siemens appliances and Quooker taps, luxuriously appointed bathrooms, Amtico flooring. impressive entrance halls with vaulted ceilings, part galleried landings and sky light windows, American walnut handrails with wrought iron baluster to staircases, landscaped gardens.





SECOND FLOOR

Whilst every attempt has been made to ensure the accuracy of the floorplan, no responsibility is taken for any error, omission, or misstatement. This plan is for illustrative purposes only.

148 Hutton Road Shenfield Essex CM15 8NL ■ 01277 225191 ■ admin@wnproperties.co.uk

Every effort has been made to ensure the accuracy of these particulars that have been prepared in good faith in conjunction with the vendor and they cannot be guaranteed and should not form part of any offer or contract. We have not checked the existence of relevant permissions, legal ownership, fixtures, fittings and appliances are in working order or fit for purpose. Photographs are for general information and it cannot be inferred that any items shown are included in the sale or within the ownership of the seller and therefore must be verified by your legal representative. No assumptions can be made from any description or image, relating to the type of construction or structural condition. All measurements are approximate, and any drawings or floorplans provided are for general guidance and are not to scale. Consumer Protection from Unfair Trading Regulations 2008 and the Business Protection from Misleading Marketing Regulations 2008.